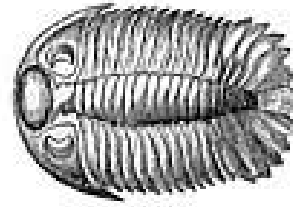


The Trilobite



Wisconsin Geological Society

January 2020

NEXT WGS MEMBERSHIP MEETING & PROGRAM Monday, January 13, 2020

Immaculate Heart of Mary Church Hall
(Downstairs, Enter at back of building)
1212 South 117th Street (Just North of Greenfield Ave):
West Allis, Wisconsin

7:00: Business meeting .

There will be no formal presentation. Bring something to show or have identified.

The Mineral Study Group will be meeting at 6:00pm in the church hall .

WGS Minutes

December 9, 2019

Immaculate Heart of Mary Church Hall

The business meeting was called to order at PM by our President, Pierre Couture.

The minutes of the November meeting were printed in *The Trilobite*. Ed Miller made a motion to accept the minutes as published. Sue Eyre seconded. The motion was approved.

New Memberships: Phyllis Weis applied for an individual membership and Linda and Brian Hoffman (son Joel, spouse Amanda, grandson Alan) applied for a family membership. Their memberships were approved.

Guests: Penny and Frank, Ed Fyrnys's cousins.

Treasury Report: Pierre Coutures read the treasurer's report. The treasurer's report was not accepted because the treasurer was not present.

Committee Reports:

Show: No update.

Newsletter: Paul Schmidt is looking for submissions

Continued on next page.....

Minutes Continued from page 1....

Lapidary: No update.

Mineral & Fossil Study Groups:

Mineral study group will be 6PM the night of our next meeting at our general meeting location.

Junior Rockhounds: Two Junior Rockhounds were present. Pierre gave them small sample boxes of rocks.

Field Trip: We'd like to go to the Field Museum on April 25 to see the meteorites we missed on the previous trip.

Sunshine: No report.

Unfinished Business:

None

New Business:

A member made a motion to make Ed Fyrnys an honorary member. Jody Rymaszewski seconded. The motion was approved

Announcements: .None

Door Prizes: Several members donated, including the Eyres. The winners were: Steve Mayer, Tom Kullinger, Denise Hohenfeldt, John Eyre, Bob Schmidt, Ed Miller, Phyllis Weis, Richard, Jody Rymaszewski, Mason, Sue Eyre, Don Shervy, Mike Macali, John Hammetter, Wanda Riel, Dwayne, Pierre Couture, Rebecca Schmidt, Steve Klein, Penny and Frank.

Adjournment: A member made a motion to adjourn. Denise seconded. The motion was approved. The meeting adjourned at 8:06 PM.

Barbara Brown, WGS Secretary



WGS Members, Please Note:

Your Membership Dues are renewed in November.

\$15.00 Single Membership, \$20.00 Family Membership

Please remember to send your check to Club Treasurer Christopher Nohl, 3240 N. Summit Ave , Milwaukee 53211

CALENDAR OF EVENTS

The Midwest Federation website has an extensive calendar of shows and activities throughout the Midwest. <http://www.amfed.org/mwf/Calendar/calendar.html>

An extensive list on mineral shows is also at: <http://www.the-vug.com/vug/vugshows.html>

March 14,15 2020: Appleton WI: “Fox Rocks”

Grand Meridian, 2621 N. Oneida

Saturday 10-5, Sunday 10-4

March 14,15 2020: West Bend WI: Kettle Moraine Geological Society Show

Washington County Fair Park & Convention Center

3000 Hwy PV (1 block E of St. Hwy 45)

Sat 10-5, Sun 10-4

March 28,29 2020 Janesville, WI: Badger Lapidary and Geological Society Show

Rock County Fairgrounds, Craig Center Building, 1301 Craig Ave.

Sat 9-5, Sun 9-4

May 2,3 2020: Marshfield WI. Heart of Wisconsin Gem, Mineral, Fossil & Jewelry Show

Marshfield Senior High Fieldhouse

1401 E. Becker Road

Saturday 10-5, Sunday 10-4

May 16,17 2020: Wauwatosa WI. Wisconsin Geological Society Annual Show

Muellner Building, Hart Park (Park entrance at 72nd and State Street)

Saturday 10-5, Sunday 10-4:30

This is from the Dec. 2019 AFMS Newsletter www.amfed.org

Multi-Federation Field Trip - June 13-16, 2020

Blue Forest for petrified wood, dig Fish Fossils (fee) and we're working on several other trips in the area, all in conjunction with the Rocky Mountain Federation Show and Convention being held in Big Piney, Wyoming, June 19, 20, and 21. So, make it a vacation and visit Wyoming.

For information about this trip, contact Doug True (dtruefossils12@yahoo.com).

For show and other trip information contact Jim Gray (jimgray@wyoming.com).

We are looking forward to this great show. Doug True



Field Trip to the Field Museum

On Saturday, October 19, 2019 20 some WGS members boarded a bus in Brookfield, WI for a field trip to Chicago's Field Museum. We were escorted through the iconic main hall to a door that opened a whole new world of what lies behind the scenes.



Inside the main hall of the Chicago Field Museum

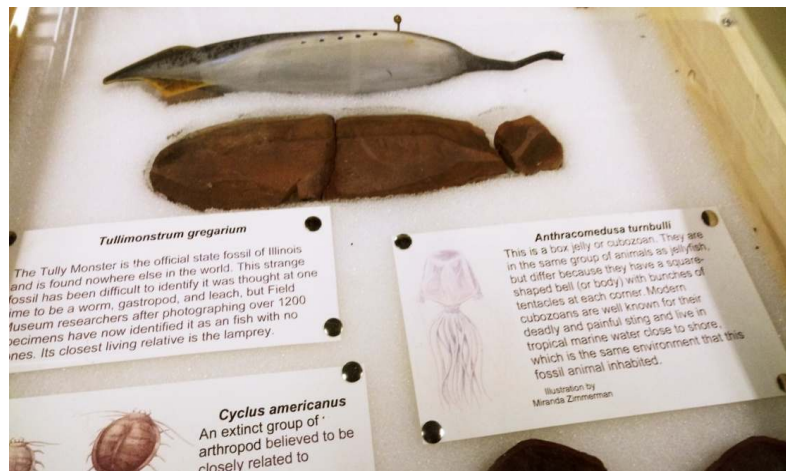


Behind closed doors we saw row after row of a vast fossil collection that the public rarely gets to see. Club members walk down one of many rows lined with drawer- filled cabinets filled with



Some of the many fossils including a huge Trilobite...

Some of the display of Tullimonstrum fossils...



Pictures and text from Sue Eyre

At our December Meeting everyone enjoyed our Pot Luck Supper. There was quite a variety of food and plenty for all.

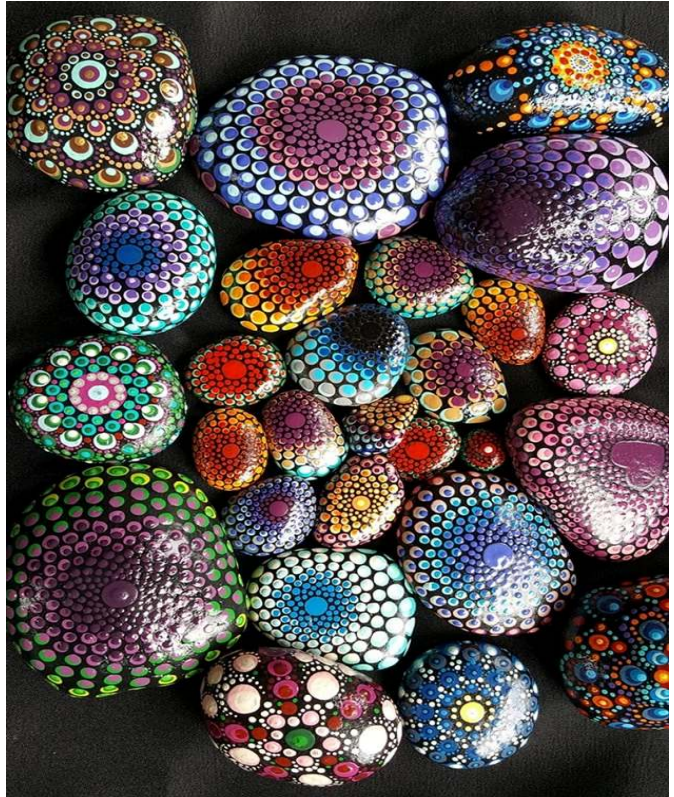
Merry Christmas and Happy New Year to all!



Stone artistry

These examples of stone artistry were posted on Facebook.

Great Lakes Rocks and Minerals Group



[James Brunt Artist](#) Spends Hours Arranging Natural Objects Into Stunning Mandalas, Leaves Them For You To Find

Bench Tips by Brad

DIVIDERS

A set of dividers is a tool I find very useful in laying out the geometry of a piece I'm making. It has two needle-like tips with an adjustment to set the spacing between them.

They can be used to transfer a measurement. Let's say you need a 7mm wide strip of sheet metal. Set the spacing between the divider tips to 7 mm on the ruler. Then lay the sheet on the bench, put one tip against the edge, and run the dividers down the edge scribing a line parallel to the edge.

Dividers can be used to mark equal segments of a line or arc. For instance, assume a line between A and B that might be straight or curved, and you want to divide it into 5 equal lengths. Set the dividers to an estimate of the distance. Starting at Point A, use the dividers to mark off five lengths along the line. If you end up short of Point B, lengthen the distance on the dividers. If you end up overshooting Point B, shorten the length of your dividers. After a few tries, the length on the dividers will be the exact distance you need to mark the 5 segments.

Dividers can let you quickly find the center of a circular disk. With one tip of the dividers at the edge of the disk, set the other tip to an estimate of where the center might be. Fix one tip of the dividers at the 3 o'clock position and scribe an arc with the other tip near the center. Do this again from the 6 o'clock, 9 o'clock, and 12 o'clock positions. The arcs at the center will form a small four-sided box, and the center of the box is at the center of the disk.



See all Brad's jewelry books at [Amazon.com/author/Bradfordsmith](https://www.amazon.com/author/Bradfordsmith)

www.BradSmithJewelry.com



Cryogenian Period

This was a geologic period that lasted from 720 to 635 million years ago.

The name of the geologic period refers to the very cold global climate of the Cryogenian.

Two of the greatest ice ages (The Sturtian and Marinoan glaciations) known to have occurred on earth happened during this time. These events are still the subject of much scientific controversy. The main debate contests whether these glaciations covered the entire planet (the so-called "Snowball Earth") or a band of open sea survived near the equator (termed "slushball Earth).

Glacial deposits dating from this time indicate that earth suffered the most severe ice ages in its history during this period. Glaciers extended and contracted in a series of rhythmic pulses, possibly reaching as far as the equator. Throughout this time, the world was a barren place. The landmasses, which were largely assembled together in the form the supercontinent of Rodinia, were utterly void of life, and would remain so for hundreds of millions of years. Owing to the bitter cold of the period, it is assumed that the land was a lonely, snowy desert rather like modern-day inland Antarctica.

Life existed long before the Cryogenian period and obviously survived through it. Plants, animals, and fungi all existed, albeit almost exclusively in unicellular form. There is some evidence for small burrows under microbial mats, perhaps made by simple multicellular organisms. Small organic fossils called acritarchs have been found in large quantities and diversity prior to the Cryogenian period, but both crashed during the period.

The end of the Cryogenian brought the beginning of the much warmer Ediacaran Period. The Ediacaran spans 94 million years from the end of the Cryogenian Period 635 million years ago, to the beginning of the Cambrian Period 541 Mya. It was a time of immense geological and biological change, and records the transition from a planet largely dominated by microscopic organisms, to a Cambrian world swarming with animals.

Throughout the history of the Earth, the planet's climate has been fluctuating between two dominant climate states: the greenhouse Earth and the icehouse Earth. These two climate states last for millions of years and should not be confused with glacial and interglacial periods, which occur only during an icehouse period and tend to last less than 1 million years. There are five known great glaciations in Earth's climate history; the main factors involved in changes of the paleoclimate are believed to be the concentration of atmospheric carbon dioxide, changes in the Earth's orbit, long-term changes in the solar constant, and oceanic and orogenic changes due to tectonic plate dynamics. Greenhouse and icehouse periods have profoundly shaped the evolution of life on Earth.

Info from Wikipedia.org, earthlyuniverse.com, wisegeek.com

**Official publication of
The Wisconsin Geological Society Inc.**

The **Trilobite** is published monthly, except for the months of July and August. It is mailed without further charge to the members of the **Wisconsin Geological Society Inc.** Subscription fee to non-members is \$10.00 per year.

All items printed in the Trilobite may be quoted, unless expressed permissions from contributing authors, newspapers, or magazines prohibits recopying. We ask that recognition be given, and we will also recognize others.

Publisher:
Paul Schmidt
8213 Red Arrow CT.
Wauwatosa, WI 53213

Wisconsin Geological Society, Inc
Committee Chairpersons:

All-Amer Club Entry	Barbara Brown;:414-258-5761
UW-Milw Liaison:	Jody Rymaszewski: 414-771-4780
Field Trips:	John Hammetter: 414-519-1958
Historian:	Jody Rymaszewski : 414-771-4780
Junior Rockhounds:	Denise Hohenfeldt: 414-442-5618
MWF Liaison:	Jody Rymaszewski: 414-771-4780
Nominations:	Sue Eyre (3 yrs) 414-365-0571
	Rebecca Schmidt (2 yrs) 414-263-1691
Parliamentarian:	Jody Rymaszewski : 414-771-4780
Study Groups:	
Mineral:	Pierre Couture 414-475-0186
Lapidary:	
Show Chairman:	Paul Schmidt: 414-771-8668
WebMaster:	Pierre Couture: 414-475-0186
Sunshine Person:	Margaret Pearson: 414-464-0781
Business Agent	Margaret Pearson: 414-464-0781

The Purpose of the Wisconsin Geological Society, Inc is to:

Create an interest in the study of Geology

Provide a means for personal development in Geology.

Disseminate knowledge concerning all phases of Geology.

President:
Pierre Couture
1001 S. 97th St
West Allis, WI 53214
414-475-0186

Vice President:
John Hammetter
2507 N. 61st St.
Milwaukee, WI 53213
414-444-5973

Secretary:
Barbara Brown
2446 North 69th Street
Wauwatosa, WI 53213
414-258-5761

Treasurer
Christopher Nohl
3240 N. Summit Ave
Milwaukee 53211
414-520-2870

Director (2022)
Bob Schmidt
13880 W. Wilbur Dr
New Berlin , WI 53151
262-844-5404

Director (2021)
Steven Mayer
1556 Blackfoot Drive
Grafton, WI 53024
414-277-7321

Director (2020)
Chuck Riel
4320 S. 46th St
Greenfield, WI 53220
414-328-3194

Editor: Trilobite
Paul Schmidt
8213 Red Arrow Ct.
Wauwatosa WI 53213
414-771-8668
pvs@wi.rr.com



The **Wisconsin Geological Society, Inc** is a member of the Midwest Federation of Mineralogical and Geological Studies, which is a part of the American Federation of Mineralogical Societies.
www.amfed.org/mwf

WGS WEBSITE ADDRESS:
www.wisgeologicalsociety.com

Names, addresses and telephone numbers listed in the Trilobite are not to be used for any commercial purpose, sold, or given to a mailing list company, or used for personal gain in any way.

The Trilobite
Official Publication of:
The Wisconsin Geological Society Inc.
8213 Red Arrow Ct.
Wauwatosa, WI 53213

January 2020
Volume 76 Number 01

FIRST CLASS

To:

Page 12



The Trilobite



January 2020

General Membership meetings are held each month (except July and August) on the second Monday of the month at 7:00p.m. in the Parish Hall (lower level) of the Immaculate Heart of Mary Catholic Church, 1212 South 117th Street; West Allis, Wisconsin.

All news, articles, and pictures to be included in the Trilobite should be forwarded to the editor by the 15th of the month. They can be mailed or e-mailed to:
Paul and Verna Schmidt
8213 Red Arrow Ct.
Wauwatosa WI 53213
pvs@wi.rr.com

WGS Members, Please Note:

**Your Membership Dues are renewed
in November.**

\$15.00 Single Membership
\$20.00 Family Membership

*Please remember to send your check to
Club Treasurer Christopher Nohl
3240 N. Summit Ave , Milwaukee 53211*

The check should be made out to WGS

**The Wisconsin Geological Society, Inc
is now in it's 84th year**