

THE BADGER DIGGIN'S

The Badger Lapidary and Geological Society, Inc.

Monroe, Wisconsin

Devoted to the Earth Sciences

Vol. 51, No 4

April 2016

President's Message

Hello Fellow Badgers

"OUR CLUB NEEDS YOU!"

Our big show is coming up this weekend. We still have openings for volunteers for our various tables and activities. This show is the major funder of our group. We need this show to be successful in order to continue as a strong group. It helps us purchase and replace club equipment. It helps to pay for our club insurance that allows us entrance to certain locales for our field trips. It exposes our club to other rock enthusiasts and gives them an easy opportunity to join our club. Everyone benefits from this show and everyone should help out anyway they can. We will start set up this Friday (4-8-16) at 5:00 pm at the Monroe High School. Please come and help with set up if you can. We will also need help on Sunday night for tear down. Please check the club's desk at the show to see what slots are still open on the Saturday and Sunday schedule. There are still some display boxes available where you can show off your collections.

I hope to see you there

Clay Schroll

President

Badger Lapidary and Geological Society

The April Meeting will be our Annual Show on Saturday, April 9th and Sunday, April 10th. This will be held at the Monroe High School. Set-up will be Friday night after 5:00 and tear-down will be immediately after the show closes on Sunday afternoon. Hope everyone can come out to help!

Laurie Trocke

Newsletter Editor



Officer Roster:

President

Clay Schroll
1238W Stephenson St
Freeport, IL 61032
815-233-2136
mrclay71@me.com

Vice-President

Brian Green
PO Box 396
Warren, IL 61032
815-745-2228
Cgreen5472@hotmail.com

Secretary

Teri Marche'
5415 Lost Woods Court
Oregon, WI 53575
608-835-2653
tmarche555@gmail.com

Treasurer

Dan Trocke
4771 CTH II
Highland, WI 53543
608-215-5307
dtrocke@acscm.com

Field Trip Chair & Newsletter Editor

Dan Trocke (Field Trip Chair)
Laurie Trocke Newsletter Editor)
4771 CTH II
Highland, WI 53543
608-935-0597
lor3@netscape.com

Show Chairperson

Debbie Wehinger
708 W 2nd Avenue
Brodhead, WI 53520
608-897-2608
jdrules3@gmail.com

Officer at Large

Marv Hanner
PO Box 201
Juda, WI 53550
608-934-2001
thumbnail.mins@gmail.com

BLGS 2016 Calendar of Events

- Apr 9 & 10:** Annual Show at Monroe High School
- Apr 23:** Field Trip: Local Monroe Quarry *Dan*
- May 14:** Meeting: Community Room, First National Bank & Trust in Monroe at 10:00 – Wire Wrapping *Teri*
- May 28:** Field Trip: Rockford, IA Fossil Park *Clay*
- June 11:** Annual Picnic w/Rockford & Freeport Club at Gitchell's
- June 25:** Field Trip: Iron County, MI *Mike*
- July 9:** Field Trip: Agate Expo, Cedarburg, WI
- July 16:** Field Trip (Note date change): Moose Lake Agate Days, Mary Ellen Jasper – MN *Deb*
- Aug 13:** Field Trip: Local Agate Collecting *Dan*
- Aug 27:** Field Trip: Wausau Area w/Bill Schoenfuss (tentative)
- Sept 10:** Meeting: Community Room, First National Bank & Trust in Monroe at 10:00 – Annual Show & Tell & Intro to Lost Wax Carving *Dan*
- Sept 24:** Field Trip: SW Wisconsin Mines *Marv*
- Oct 8:** Meeting: Community Room, First National Bank & Trust in Monroe at 10:00 – Lost Wax Carving *Dan*
- Oct 22:** Field Trip: Lapidary Day at the Trockes & Lost Wax Casting *Dan*
- Nov 12:** Meeting: Monroe Public Library at 10:00 – Freeport Show

Dec 10: Meeting: Annual Christmas Party

There is not a field trip in November or December due to the Holidays

***NOTE* The venue for the meetings has been updated. Please note the changes! Thank you!**

Minutes of March 12, 2016

Respectfully submitted by Teri Marché

Members Present:

Deb, Don, and Arienne Wehinger; Robert Gilbert; Marv Hanner; Clay Schroll; Dan, Laurie, and Erin Trocke; Brian and Cindy Green; Donna and Dave Reese; Colleen, Garrett, Jacob, and Keith Kerl;; Tamara and Randy Peterson; Linda and Neal Trickle; Jordan and Teri Marché.

Program: Due to a mix-up in about the meeting location, the program on Faceting, presented by Neal Trickle took place after the business meeting. It was a fine and interesting program. Thank you , Neil.

Meeting called to order by President, Clay Schroll in the Community Room at the First National Bank in Monroe at 10:30.

Minutes: were approved as published upon a motion by Marv Hanner, seconded by Dave Reese.

Treasurer: reported checks for dues deposited, and we are quite solvent

Announcements: All are invited to the Freeport Club's Geode s'plode and pot luck on April 2 at Bethany Church of Christ in Freeport. You do not need to bring geodes to participate.

Members were reminded to sign up for showcases and for jobs at the upcoming show.

Nevin Franke is back from Tucson and caught up enough to finally price out items selected at the January field trip. Contact him at Burnie's Rock Shop

First Door Prize: A lovely Chinese Ammonite was won by Cindy Green

Old Business: Randy Peterson asked that we introduce ourselves again, and we happily obliged. There was no other new business

Second Door Prize: Deb Wehinger won a beautiful piece if polished Ohio Flint (this is rather ironic, as she has been trying to plan a trip to collect the same!).

New Business: Due to the issue of trying to contact Neal about the changed meeting place, i.e. "Does anybody know his phone number?" Deb Wehinger strongly requested that we assemble a list of members and contact information to be distributed. A discussion ensued about security issues with publishing such a list on-line, or by email. It was decided that all members be polled about willingness to be on that list; Laurie will do that by email, and give the results to Teri who will snail mail it out to all.

It was decided to keep the rest of this year's meetings at the bank at 10:00 and cancel out those we had reserved at the library at 11:00.

Deb Wehinger shared her efforts to arrange MSHA training for the club. Her contact will try for a grant to pay for it, so it would be free to members. It would involve 24 hours of work on several days.

Third Door Prize: A small polished Fluorite sphere was won by Linda Trickle

Show Business: Deb reported changes at the high school, namely with the FFA regarding their tables. Through a miscommunication they were not paid last year, and in any case, they no longer keep a sufficient number at the school. We would have to get them from 10 miles out of town. Teri suggested that we rent them from the same place we got the tables at the Middle School the year we had to move

the show there. They deliver to the door and pick up afterward. This needed no vote from the group.

Adjourn: at 11:30, moved by Randy Peterson, seconded by Deb Wehinger.

What's Rockin'

HELLO!!! Go sacrifice a tuna (but don't go around it!!! –Trump) and buckle your seatbelts, it's once again time for that article that you are always craving more of, but can't have as the author of said article is a poor 17 year old highschool student overworked and underappreciated by his fascist dictatorial parental over Laure-ds and also has homework and Kerbal Space Program (TO THE MUN JEBADIAH!!! (as soon as I figure out how to save you from rocketing back into the planet after my last failed mission...)) to have time to bother. Also... there are only meetings once a month... that's right! You are now reading: "what did people bring and leave on the table for a couple of hours"!!!!!!! Hurray!

First of all, I would like to make the following corrections to last month's issue; The piece of fluorite in the picture that I was given, was in fact not a fluorite at all, but a calcite that *was* roleplaying as a Flourite for comicon and had put it down on his facebook page, sorry but now we know better (we're on to your tricks!). And that concludes corrections.

Oh, actually one more corrections. The death count of zero that I reported last month, was actually 37... soooooo, yeah... my mistake.

Anyways, I was not at this month's meeting, so let's see what we've got here. First off, Dave Reese brought a Michigan float copper (anti gravity? Magnetism? A hidden string???) No idea, but it sounds pretty cool) Next up, a quick follow up on our April plans, the lake monster that we are hunting, is in fact!!! A river monster, who was trapped in the

lake during a drought as the river became too shallow for him to get past, but he sorta likes it there now and hasn't bother to return home, his parents questioning his life choices, don't approve of his "hanging out with those thug lake trout" Clay Schroll (how do you pronounce that?) brought a Lemur-ian Agate from unknown, but as many of those fascinating creatures originate from Madagascar, I would guess it is from there. Brian Green (I could-a sworn it was Greene, but ok) brought some Native Copper of the Upper Peninsula, which is actually part of Michigan and therefore NOT a native resident of Wisconsin and requires an ID when crossing state borders, but this piece was smuggled across because Brian owed it some money. Brian also brought a piece of Rutilated Quartz from the majestic country of ?. Cindy Green (who did in fact where green one can only assume (or perhaps was green?)) brought a Dugway Geode aaaaaalllll the way from Utah, the, of course, tomato paste state. And second last, but not second least, was Dan Trocke, always with the intent of taking up as much of this article as possible, but I think I've rambled on for long enough to prevent that. Anyways, here we go. Dan Trocke (my Dad, HI DAD!) brought from Arkansas, a piece of Brookite, formed in small rivers, from Brazil a piece of Rhodenite, a piece of Cassidanta from Marv Hanner who actually owns and brought the rock and I suppose got it from some guy who got it from Bolivia (if you collected it yourself, Cool Beans!!! How was Bolivia?) Daniel (full name for Dan, we're still talking about my dad) also brought a very unique piece of copper, full of silver, which much of said silver had been hastily chiseled away much as a squirrel chews an acorn, so as to keep the silver for himself for a later date in time, he then sort of gave up and left most of the silver on it anyways... This was from the Upper Michigan, most likely a friend of that Native Copper that Brian brought. Anyways, Dan brought from Morocco (I agree! More Rock O!!!) a specimen of Aragonite, and (actually this next was again from Marv Hanner) a piece of Citrine Orange Quarts. (I should've sorted these better). Dan then proceeded to unpack (one can only assume) and (one can only assume) present on the table, a Ludcamite from Mexico, a Stibnite (?) from Peru, piece of Blue

Fluorite on Quartz from China, a (one of the greatest named rocks ever) Glauberite from Imperial county California and finally an iolite crystal from...

“Somewhere” I’m going to guess, Uzbekistan, that sounds like a good guess. Yes Dan brought an iolite crystal from several miles south and east of the secondary back up capital of Uzbekistan, which of course is the ancient city of Toronto, Canada. And now Finally for the final person, Erin Trocke (my sister, His Erin!) brought some “Post-Apocalyptic spoons” that (one can only assume) formed through volcanic activity deep within the inhospitable miles of scrublands and McDonalds fields in Bernie’s Basement (not Bernie Sanders, although he too has miles of McDonalds fields in his basement... and also! A natural hotspring, at a healthy and comfortable several thousand degrees above the required thresh hold for nuclear fusion to take place slowly transforming the water into heavy unstable elements to then be turned into weapons of mass destruction to use in the ongoing war with Hillary Clinton so that she too can “feel the bern” of a thermal nuclear war head (or is that not how Democracy works...?)) anyways, these are of course made of aluminum and look pretty darn cool, they are all slightly oxidized with a very pretty dark patina, and they are very small, used of course by the tiny giraffe men during the 13th century as iron was in very short supply during their war of independence against Bernie and his Rock shop.

Rock the What’s Rockin’ Table!

Since there isn’t a meeting in April, your best chance to show off your favorite things is by filling a display case at the show. There are still some available!! Everyone should try and make Connor’s job more of a challenge.

Anyways! I bring unfortunate news, that if you are reading this, that means (probably) that you read everything else that I just wrote and were quite possibly even entertained by it, and you are just as bad as I am... thanks again for reading Connor’s “What did people bring and leave on the table for a few hours” article for this month’s newsletter! Please join us again next month as I (Connor (Trocke)) take on difficult questions such as: “what constitutes a fruit, and how do they differ from meat”, “Why people can’t be made of paper plates even if you really want to” and “why are you still reading this?” and “Why am I still typing this?” and “how to set your house on fire to commit insurance fraud without being caught” (Happy April Fool’s day everyone! I hope you think this is more entertaining than Mom’s!!!)

-Connor Trocke



April Field Trip

The April Field trip will be held on Saturday, April 23rd. We will be going to a local quarry in the Monroe area to collect fossils. This has proven to be a great trip in the past. A separate email will be sent out closer to the trip with meeting times & location as well as what to bring. Hope you can make it!!

Monster Mystery: Scientists Solve Decades-Long Puzzle of Alien like Creature

by Laura Geggel, Staff Writer | March 16, 2016 02:54pm ET

The study was published online March 16 in the journal Nature.



The Tully monster likely used its tail to propel it forward in the water.

Credit: Sean McMahon | Yale University

In 1958, amateur fossil collector Francis Tully found a prehistoric creature so strange that even scientists called it a monster. The beast has perplexed researchers ever since, with some calling the so-called "Tully monster" a worm and others classifying it as a shell-less snail.

But now, an analysis of more than 1,200 Tully monster (*Tullimonstrum gregarium*) fossils has uncovered the monster's true identity. It's a 307-million-year-old jawless fish, a creature in the lineage leading to modern-day lampreys, the researchers found.

"It's a very unusual animal," study co-author Scott Lidgard, curator of invertebrate paleontology at the Field Museum of Natural History in Chicago, told Live Science.

The roughly foot-long (0.3 meters) monster had a narrow body with eyes like a hammerhead's on the top of its head and a long, slender snout ending in a toothy jaw.



This specimen shows a clear view of the Tully monster's eyes (right), proboscis (middle) and mouth (left).

Credit: Nicole Karpus

Scientists formally described it in 1966, and in 1989, Illinois designated it as the official state fossil. But experts still couldn't make heads or tails of it. They couldn't even place it in a phylum, a big-picture category that includes about 30 broad subcategories, and explains the origins of almost every living thing on Earth.

Researchers have found thousands of Tully monster specimens in Illinois over the years. Many of them were digitally scanned into The Field Museum's electronic database, so scientists had plenty of samples to examine while undertaking the new study.

"Basically, nobody knew what it was," study co-author Derek Briggs, a professor of geology and geophysics at Yale University and a curator of invertebrate paleontology at the Yale Peabody Museum of Natural History, said in a statement. "The fossils are not easy to interpret, and they vary quite a bit. Some people thought it might be this bizarre, swimming mollusk. We decided to throw every possible analytical technique at it."

The researchers combed through the database and also used synchrotron elemental mapping, a technique that uses a powerful light source to determine the chemistry within a fossil.

Although soft-bodied, the Tully monster is a vertebrate that likely used its tail to propel itself forward in the water. Moreover, analyses showed that "the monsters are related to the jawless fishes that are still around today by a unique combination of traits, including primitive gills [and] rows of teeth," Paul Mayer, The Field Museum's fossil invertebrates collections manager, said in the statement.

It also has "traces of a notochord, the flexible rodlike structure along the back that's present in chordate animals — including vertebrates like us," Mayer said.

The big-eyed and pointy-toothed fish was likely a predator, said study lead author Victoria McCoy, who conducted the research as a Yale graduate student and is now at the University of Leicester in the United Kingdom. However, it's unclear when the animal first developed and when it went extinct, she said.

Tips for Creating a Good Showcase Exhibit. – Teri Marché

1. Start **early!**

Don't wait until the last minute and just throw something together.

2. Pick a **theme**, something that connects the pieces you will display. It might be:

all from the **same** locality

various examples of the **same** type material (i.e. different forms of pyrite)

different minerals, **same** shape

different minerals, **same** color

etc., but something should be the **same!**

3. Consider **scale**:

put large items in a large showcase,

and small items in a small showcase.

4. Plan a **background** color:

Our small showcases will have a medium blue color showing in the bottom, but if that will not show off your pieces well, find material of a color that will, and line the case first. The **large showcases** have a fairly ugly painted wooden base, and **should be covered** with something!

5. Plan the **arrangement**:

Lay out a space equal in size to the showcase size, (see images below) and start placing your pieces in it. Put the smaller ones toward the front. For the large showcases, note height, and lay out a space for the top shelf as well. Remember to leave space for the exhibit title, identification tags and other information as needed. Do not try to crowd in every rock you own!! **“Less is (often) more.”**

6. Plan the **texts**:

The exhibit **title**, should convey the theme in as few words as possible.

A short paragraph of additional **information** may be useful.

Every specimen needs individual tag with **identification** and, often, locality.

7. Create the text:

Use a **computer** (do not write, print, or scribble these by hand!). Consider

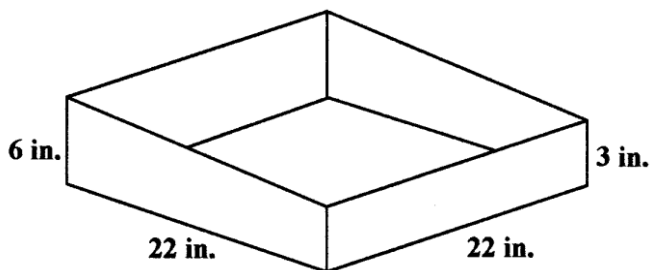
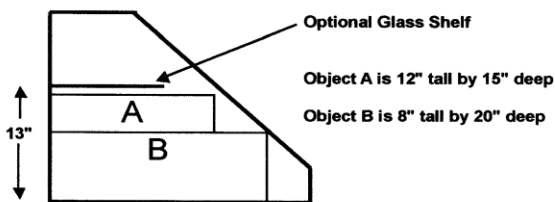
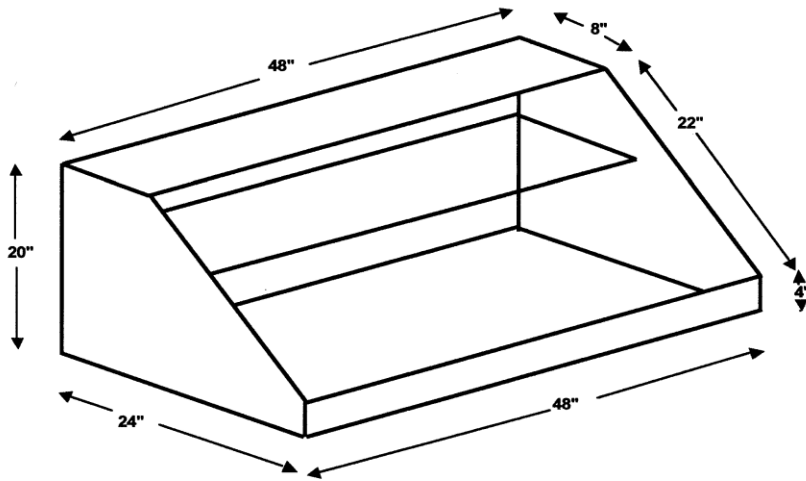
the distance at which they will be seen. Depending on the font chosen,

14-16 point size is the minimum. The title should be MUCH larger!

Simple paper tags tend to curl with heat or humidity, and become unreadable

in the showcase. They should be **mounted** on sturdy card stock using either glue sticks, or mounting film on the bottom, or clear plastic packaging tape on top.

However, the key point is to **START NOW!!!** You still have time to do it RIGHT!



Small showcase

April Mineral Related Events

9-10 April 2016: Monroe, Wisconsin

46th Annual, Rock, Gem, Mineral & Fossil Show
Organized by: [Badger Lapidary & Geological Society](#)
Monroe Senior High School (1600 26th Street,
Monroe)

9-10 April 2016: Des Plaines, Illinois

Des Plaines Valley Geological Society
Des Plaines Park District Leisure Center
2222 Birch St., Des Plaines, IL

9-10 April 2016: Marion, Illinois

2016 Gem & Mineral Show
Organized by: [Southern Illinois Earth Science Club](#)
Pavilion of the City of Marion (1602 Sioux Drive)

9-10 April 2016: Hellertown, Pennsylvania

46th Annual Gem, Mineral & Jewelry Show
Organized by: [Saucon Valley Lions Club](#)
Saucon Valley Senior High School (2100 Polk Valley
Road)

16-17 April 2016: Decatur, Illinois

Central Illinois Gem & Mineral Club 65th Annual
Mineral Gem & Jewelry Show Richland Community
College Campus, Decatur.
<http://rmkapta.wix.com/cigmc#!blank/c1rzs>

16-17 April 2016: Lancaster, Pennsylvania

North Museum Gem, Mineral & Fossil Show
Organized by: [North Museum of Natural History and
Science](#)
Farm and Home Center (1383 Arcadia Road)

22-24 April 2016: Orlando, Florida

Rock, Mineral, Gem, Jewelry & Fossil Show
Organized by: [Central Florida Mineral and Gem
Society](#)
Florida National Guard Armory (2809 South Fern
Creek Avenue)

23-24—EAU CLAIRE, WISCONSIN

Annual show; Chippewa Valley Gem & Mineral
Society, Eau Claire County Exposition Center; 5530
Fairview Drive; Sat. 9-5, Sun. 10-4; Free Admission;
Kids' Activities & Crafts - Demonstrations - Shopping -
Silent Auction - Fluorescent Mineral Displays - Rocks

Collections - Rock Spheres Demonstration - Wire
Wrap Jewelry - Rock Cutting & Cabbing - Jewelry &
Gemstones - Mineral Specimens - Agates & Geodes -
Fossils & Petrified Wood - Rock Art & Carvings -
Beads & Supplies - Copper & Silver Finds - Crystal &
Amethyst - Books & Rough Rock.; contact Paul
Tubbs, 619 Van Buren Street, Eau Claire, WI 54703-
6061, (715)-834-5747; e-mail: bizpam1@charter.net

23-24 April 2016: Franklin, New Jersey

44th Annual New Jersey Earth Science Association
Gem & Mineral Show
Organized by: Franklin-Ogdensburg Mineralogical
Society and the [New Jersey Earth Science
Association](#) and the [Sterling Hill Mining Museum
Franklin Borough School](#) (50 Washington Avenue,
Franklin) Indoor / outdoor

23-24 April 2016: Cuyahoga Falls, Ohio (Akron area)

Semi Annual Gemboree - Gem, Mineral & Jewelry
Show
Organized by: Akron Mineral Society and [Summit
Lapidary Club](#)
Emidio & Sons Expo Center (48 East Bath Road,
Cuyahoga Falls)

23-24 April 2016: Memphis, Tennessee

The Earth Wide Open - 37th Annual Mineral, Fossil &
Jewelry Show
Organized by: [Memphis Archaeological & Geological
Society](#)
[Agricenter International](#) Expo Center (7777 Walnut
Grove Road, Memphis)

29 April - 1 May 2016: Kalamazoo, Michigan

57th Annual Rock, Gem, Fossil, Jewelry & Mineral
Show
Organized by: [Kalamazoo Geological & Mineral
Society](#)
Theme: *Dinosaurs Will Rule*
Kalamazoo County Expo Center (2900 Lake Street)

Wisconsin April Events

- **Beekeeping for Beginners**
- **Saturday, April 9, 2016.** 9 am to 4 pm. Day long Beginners Beekeeping Classes will repeat on Jan 16 & 30, Feb 20, Mar 19, Apr 9 and May 7, 2016. Second Step Class is Mar 5, 2016. All classes run from 9am - 4pm. The fee of \$50 covers coffee, handouts, free sample journals and catalogues, and props galore for you to handle. Individual, hands-on Mentoring is also available, \$20 for 2 hours in the apiary. To register, contact Jeanne Hansen at 608-244-5094. Dane Co Extension Building, 5201 Fen Oak Dr, Madison, [Statewide](#). Call 608-244-5094.
- **GO Discover - Our Home Planet**
- **Saturday, April 9, 2016.** 9 am - 2 pm. Come enjoy our planet! Drop in to plant some trees, create with recycled materials, go on an Earth Day photo/art scavenger hunt, and learn how to help the Earth! Free. Havenwoods State Forest - Environmental Awareness Center, 6141 N Hopkins St, Milwaukee, [Milwaukee County](#). Call 414-527-0232.
- **Start Your Seeds**
- **Saturday, April 9, 2016.** 11 am. Learn all about early spring gardening and starting your seeds indoors with this informative seminar at the library. Gain some useful gardening tips to create that desirable summer garden. Please call the library to register. free. Powers Memorial Library, 115 Main St, Palmyra, [Jefferson County](#). Call 262-495-4605.
- **Doctor Who Trivia Night**
- **Monday, April 11, 2016.** 6:30pm to 7:30pm. Ages 13-18. Registration is appreciated Allons-y! Test your Doctor Who knowledge at our Doctor Who trivia night. We'll focus on the current series with a few classic series questions thrown in. Bring your friends for a night of Whovian fun! free. Salem Community Library, 24615 89th St, Salem, [Kenosha County](#). Call 262-843-3348.
- **Tunes at Monona Terrace**
- **Wednesday, April 13, 2016.** 5:30-7. Free And Open To The Public! Slip on your dance shoes and enjoy familiar tunes from the heyday of live dance music. Tunes' concerts feature the talents of local and regional musicians showcasing a wide variety of musical genres including polka, big band, swing, 50s & 60s, Blues, and tribute bands. A cash bar and light fare are available for purchase at 5pm. Ample seating available. A wooden dance floor will be available at all indoor concerts Monona Terrace Community & Convention Center, One John Nolen Drive, Madison, [Dane County](#). Call 608-261-4000.
- **Prairie Hill Hoedown Auction & Dance**
- **Saturday, April 16, 2016.** 5:00 pm. Join Prairie Hill Waldorf School as they celebrate their annual Spring Auction, & experience country hospitality at its best.
- Participate in Live & Silent Auctions featuring local & nationwide goods & services, with Wisconsin Auctioneer's Association Hall of Fame's Auctioneer Carol Miller. Enjoy delicious food catered by Gooseberries' nationally renowned Chef Mike, as well as games, music & dancing. Don't miss this happenin' hoedown! Tickets online. \$30/person Early Bird Special, \$40 Regular Admission. Prairie Hill Waldorf School, N14W29143 Silvernail Rd, Pewaukee, [Waukesha County](#). Call 262-646-7497
- **Wisconsin Valley Coin Show**
- **Sunday, April 17, 2016.** 9 am to 4 pm. New location: The Plaza Hotel & Suites. Includes dealers in coins, currency, bullion and all areas of numismatics. Free door prizes and a kids' activity table. Tickets available for our raffle featuring gold coins and valuable numismatic items. Members exhibit educational displays. Everyone welcome. Contact: Thad Streeter, 5002 Tanya St., Schofield, WI 54476. Phone: 715-574-2777. FREE. The Plaza Hotel & Suites, 201 N 17th Ave, Wausau, [Marathon County](#). Call 715-845-4341
- **Star Trek: The Ultimate Voyage**
- **Tuesday, April 19, 2016.** 7:30 pm. Celebrate 50 Years of Star Trek with the 100-city concert tour. Featuring Star Trek's groundbreaking musical achievements performed by a live symphony orchestra and the most iconic Star Trek film and TV moments beaming in high definition onto a 40-foot wide screen. This live event is perfect for music lovers, filmgoers, fans and those looking for a unique concert experience. Visit our website for more information. \$25, \$35, \$55. Resch Center, 1901 S. Oneida St, Green Bay, [Brown County](#). Call 920-405.1126.
- **Earth Day Full Moon Night Hike**
- **Friday, April 22, 2016.** Earth Day Full Moon Night Hike Friday, April 22nd, 8:00 p.m. - 9:00 p.m. Celebrate the Earth! We'll see the earth in the light of the moon as we go on a hike as we join people worldwide in celebrating Earth Day. Please leave your flashlights at home as they will spoil the experience. Pre-registration required. Friends: \$3.00/General Public: \$5.00 Pringle Nature Center, 9800 - 160th Avenue, Bristol, [Kenosha County](#). Call 262-857-8008
- **Spring Symphony Nike Hike**
- **Friday, April 22, 2016.** 7:30-9 pm. Nature awakens from its long winter slumber with a symphony of sound. Journey through the darkening spring woods to discover who are the members of the spring choir. This hike is most appropriate for adults and children over the age of 6 years. Free with 2016 Wisconsin State Park Vehicle Admission Sticker. Kettle Moraine State Park - Northern Unit - Zillmer Trail Area, W833 CTH SS, Campbellsport, [Fond du Lac County](#). Call 920-533-8322.
-
-

- **Terrace Town**
- **Saturday, April 23, 2016.** 10am-4pm. Free architectural fun for the whole family! View 10,000 square feet of "green" scale model cities that were designed by 1500 local students. In addition, young and the young at heart are invited to try their hand at box building design and placement in our very own Terrace Town city created at this event. Other free family activities include a cookie building activity, a Lego building area, and special activities by the Madison Children's Museum and AIA Wisconsin. Monona Terrace Community & Convention Center, One John Nolen Drive, Madison, [Dane County](#). Call 608-261-4000.
- **The Accidental Hero**
- **Saturday, April 23, 2016.** 7:30 pm. The Accidental Hero is a multi-media one-man show about a WWII American officer who miraculously liberates the Czech villages of his grandparents. It's a true story, written and performed by his grandson. Marcus Center for the Performing Arts, 929 N Water St, Milwaukee, [Milwaukee County](#). Call 414-273-7121
- **The Barley Jacks**
- **Saturday, April 23, 2016.** 8 pm. Acoustic Alchemy and Fiddle Wizardry Saturday, April 23, 2016 8:00 pm Cash Bar - 7:00 pm These masters of the fiddle, guitar, bass, and drum meld their divergent backgrounds of blues and bluegrass, classical and Celtic, R&B and bebop, to create something entirely new. Premium \$25 Standard \$22. Schauer Arts Center, 147 N Rural Street, Hartford, [Washington County](#). Call 262-670-0560 ext 3.
- **Canine Campus Crawl**
- **Sunday, April 24, 2016.** 11 am. A 2.5 mile run/walk by the UW Pre-Vet Club to help support Dane County Humane Society. Enjoy the beautiful lake scenery & to our fundraiser. Dogs are welcome to join you in the race. Dogs must have current rabies vaccines. Additional info found at our website. Meet at Lot 60 on West Campus near UW Health Registration is also available the day of the race. Day-of registration prices are: \$30 for one person (no dogs) \$35 for 1 person & up to 2 dogs. \$30 - \$35. Lot 60, UW Madison Campus, Madison, [Dane County](#). Call 608-838-0413.
- **Free Showing of "A Walk in the Woods"**
- **Wednesday, April 27, 2016.** 1 pm. The film "A Walk in the Woods" will be shown in the Glendale Senior Citizens Clubroom on the lower level of the school. The movie is based on the 1998 memoir by travel

writer Bill Bryson, who, after retirement, decides to hike the Appalachian Trail with an old, sometimes difficult friend. Robert Redford and Nick Nolte star, supported by Emma Thompson, Nick Offerman, Kristen Schaal, and Mary Steenburgen. Nonmembers are always welcome at club events. Free. Glen Hills Middle School, 2600 W Mill Rd, Glendale, [Milwaukee County](#). Call 414-540-2100.

- **Wright Design Series**
- **Wednesday, April 27, 2016.** 7pm. Free And Open To The Public! All lectures are at 7pm in the Lecture Hall unless otherwise noted. The Wright Design Series was inspired by master architect Frank Lloyd Wright who, although known for his architectural designs, also created designs in furniture, clothing, textiles and tableware. The free lectures and discussions highlight a wide array of design topics including architecture. Monona Terrace Community & Convention Center, One John Nolen Drive, Madison, [Dane County](#). Call 608-261-4000



Wisconsin Primary Election – Tuesday, April 5th

The 46th Annual

Rock, Gem & Mineral Show

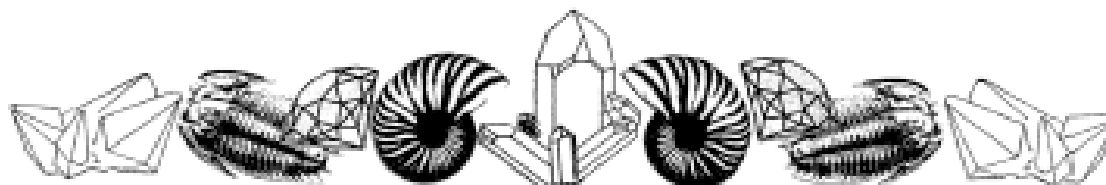
April 9 & 10, 2016

9:00 am to 5:00 pm – Saturday

9:00 am to 4:00 pm Sunday

Monroe High School – 1600 26th Street, Monroe, WI

Admission: Free Will Donation, Free Parking



Ten Dealers

in Minerals, Fossils,
Gems & Jewelry

Member Displays
Hourly Door Prizes
Demonstrators

Children's Activities

Fish Pond
Scavenger Hunt
Roaming Rock Wizard
Gold Panning

Hot Lunch

by Monroe H. S. Students
FCCLA (Family, Career and Community
Leaders of America), &
Monroe H. S. Catering

Great Speakers

Saturday, 1:30 pm: Mike Riesch,
Earhaven Museum. *Herkimer
Diamonds: Almost Forever.*

Saturday, 3:00 pm: Stephen Ballou,
Beloit College. *Yellowstone National
Park, A Possible Supervolcano.*

Sunday 1:30 pm: Carlos Peralta, U.
W. Madison. *Gemology.*

Sunday, 3:00 pm: Doug Moore, U.W.
Stevens Point. *Agates: Art and Science*

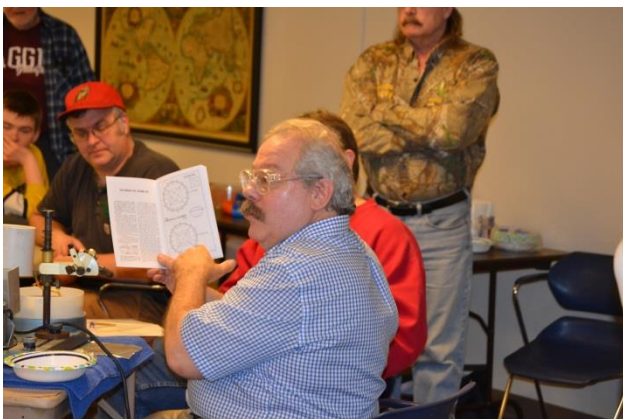
For More Information, Contact Deb Wehinger, jdrules3@gmail.com
Web Site: <http://badgerrockclub.org>

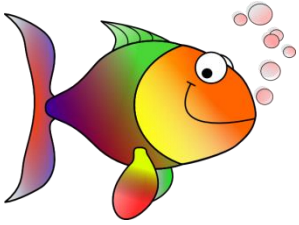
Presented by the Badger Lapidary and Geological Society

A Non-profit organization dedicated to promotion of earth science study for children, adults, and families.
MEMBER OF THE AMERICAN FEDERATION AND MIDWEST FEDERATION OF MINERALOGICAL AND GEOLOGICAL SOCIETIES

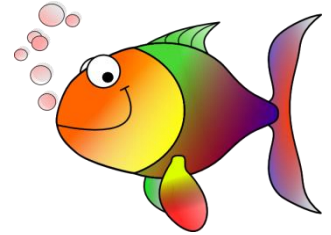
March Meeting

Faceting Demo by Neil Trickle





fish Pond Bagging At the Trocke's



Badger Lapidary & Geological Society, Inc.

Laurie Trocke, Editor

4771 CTH II

Highland, WI 53543

